

Aqua-Pure®

WATER PURIFIERS



WaterMark
AS/NZS 3497:1998
Lic WMKA21119
SAI Global



**Quality
Endorsed
Company**
ISO 9001 Lic 3937
SAI Global

Manufactured under
a quality system
certified as
complying with
ISO 9001 by an
accredited
certification body

AP9000

single undersink water filter system
installation and operating instructions

WARRANTY

The Aqua-Pure Premium AP9000 water filter system is designed to operate at a maximum pressure of 862kPa (125psi) and at a maximum temperature of 38°C. Cuno Pacific Pty Ltd warrants this filter system to be free from defects in material and workmanship for a period of one year from the date of purchase (*warranty period does not apply to cartridge which is consumable). This warranty is expressly limited to the repair or replacement at our premises of any part or parts proving defective providing the housing has been installed in accordance with our Installation Instructions all relative plumbing codes, the installation of an approved pressure limiting device preceding the filter, and the pressure and temperature do not exceed the limits stated herein. This warranty does not extend to mechanical damage caused during installation or use. Save insofar as they may be excluded by law, this warranty is given in lieu of all other expressed or implied warranties or conditions and Cuno Pacific Pty Ltd shall in no event be held liable for damages or delays caused by defects and assumes no responsibility for unauthorised repairs.

Aqua-Pure®
WATER PURIFIERS

for technical assistance and product support, phone or visit our website:

 **1300 345 837**

www.aquapure.com.au

AK200115389 (081)

3M

AP9000

single undersink water filter system

Not even an Aqua-Pure filter can make unsafe water safe

The AP9000 water filter system should only be used on water that is microbiologically safe – that is, water that has been adequately chlorinated or disinfected. Additional equipment (such as a chlorine injection system or an ultraviolet steriliser) will be required for unsafe water.

It works best when it's used

If the Aqua-Pure water filter system has not been used for more than one day, you will need to flush 1 to 2 litres of water through the system before using the water. The AP9000 requires a minimum water supply pressure of 172kPa (25psi) and not exceed a maximum water pressure of 862kPa (125psi). A 650kPa (94psi) Pressure Limiting Valve must be installed on the inlet side of this system (see below).

What a Valve

The AP9000 system has been supplied with an Aqua-Pure 98210 Multi-Function Control Valve (MFCV) as standard equipment. This valve must be installed as detailed in the Installation Drawings and Instructions, to provide:

- Flow Restriction
- 650kPa Pressure Limiting
- Dual Check Backflow Prevention
- Anti-Hammer Protection to the filter system.

This valve is fitted with a Particle Removal Screen on the inlet side to protect the intricate mechanism from debris that may be in the water supply. This screen must remain in place at all times. Failure to comply with these requirements will void the warranty.

Have a change of heart every 12 months

The heart of an AP9000 filter system is the AP9112 filter cartridge, which has a recommended maximum life of 12 months. The life and performance of a cartridge may vary depending on the volume and quality of the incoming water supply being filtered. Your cartridge may need replacing earlier than 12 months if you notice a reduced volume or flow from the filter faucet, or the return of an unpleasant taste/odour to the filtered water.

Worth doing...worth doing properly

Installation of the AP9000 filter system must comply with any existing State or Local Plumbing codes, some of which require installation by a licensed plumber. For correct operation of this appliance, it is essential that these Installation and Operating Instructions be strictly observed.

6. Plumbing the system – and let the Aqua-Pure water flow

- 6.1 Measure a length of white tubing, to run from fitting on faucet (6) to outlet connection on NEP head (4). Push tubing firmly into faucet fitting (6), ensuring it is fully seated. Push other end into the outlet on NEP head (4), (ref fig 19).
- 6.2 Measure another length of tubing to connect from the inlet connection on the NEP head (4) to quick connect fitting (2) on the MFCV (1), previously installed. Push tubing firmly into fittings.
- 6.3 Neatly fix water tubing to cupboard walls with plastic clips and screws provided.
- 6.4 Turn faucet to on position. Turn water supply on slowly to release any air trapped in the system. Allow the water to run through system for 3 minutes to flush superficial dust and fines from the system. Turn faucet off.

The water may appear “milky”; this is normal and it is caused by tiny air bubbles being expelled from the cartridge. You may flush water through the system until the water appears clear, or use the system and this condition will clear itself.

The Aqua-Pure AP9000 water filter system is now ready to produce Sparkling Clean and Great Tasting Water for you and your family's protection and enjoyment.

fig 19



5. Mounting the system

5.1 Mark location of fixing holes (ref fig 12) and fix unit to cupboard with two of the mounting screws provided (ref fig 13). Remember, approximately 55mm space must be provided below the bottom of the cartridge, to allow removal.

fig 12.



fig 13.



5.2 Remove protective red cap from cartridge (5). Align centre of label on cartridge (5) with inlet on head (4), push cartridge (5) into head (4) firmly and turn to right (ref fig 14)

fig 14.



5.3 Determine suitable location on sink or benchtop for Chrome Faucet (7). Drill a 12mm hole (ref fig 15).

fig 15.



HELPFUL HINT: For mounting in stainless steel sink, it is advisable to place masking tape over drill spot to prevent drill movement. Drill a 3mm pilot hole, followed by 12mm hole for the faucet shaft. It is advisable to use good quality, sharp drill bits

5.4 Place small rubber washer, chrome escutcheon and large rubber washer on shaft of faucet (ref fig 16). Insert faucet shaft into the hole you have just drilled (ref fig 17).

fig 16

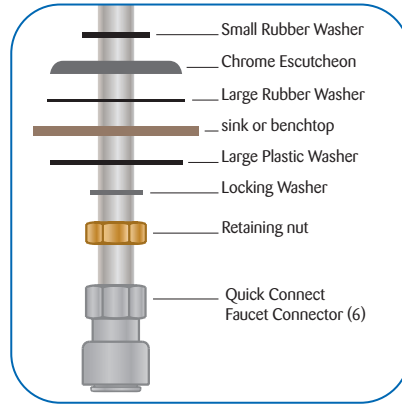
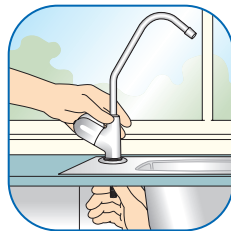


fig 17.



5.5 Place large plastic washer, metal locking washer and lock nut on undersink side of faucet shaft (ref fig 16), tighten nut and ensure faucet handle is pointing in desired direction (ref fig 18).

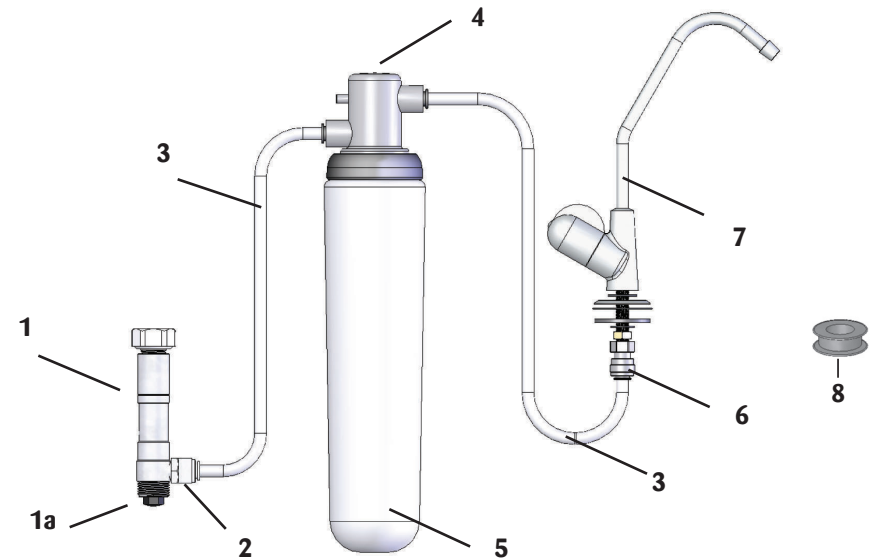
fig 18.



5.6 Screw Quick Connect Faucet Connector (6) onto the end of faucet shaft. This fitting does not require thread tape and should be tightened, so it does not leak.

Installation instructions:

1. Your Aqua-Pure AP9000 component identification & content check list:



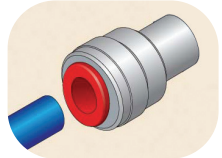
Ref	Description	Qty	Part No.
1	Multi Function Control Valve (MFCV)	1	AK200094956
1a	Black Stopper Plug	1	-
2	Quick Connect 1/4" Male x 3/8" Tube	1	AK200106396
3	High Pressure Tubing 3/8" O.D x 2 metres	1	AK200072689
4	NEP Head	1	70020042886
5	Cartridge AP9112	1	AK200115686
6	Quick Connect 3/8" Tube x 7/16-24" UNS Thread	1	AK200115371
7	Deluxe Swivel Long Reach Faucet	1	AK200043847
8	Thread Seal Tape	1	AK200095102
*	3/8" Plastic Clips for tube	4	AK200115496
*	Screws 10G x _" P/H Self Tapping	6	AK200093255

* not shown

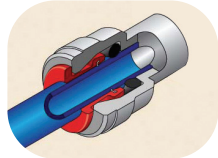
2. The Quick Connect Push-In system

All fittings provided for the water tubing are “Quick Connect Push-In Fittings”, which do not require any tools or sealing materials.

To connect:

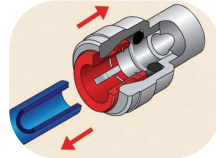


Cut end of tube square



Insert and seat firmly

To disconnect



Press and hold collet against fitting, pull tube out of fitting

3. Decide where your Aqua-Pure system should be installed before working out how

Choose a suitable area within the cupboard under the sink to mount the AP9000 water filter system see fig 1.

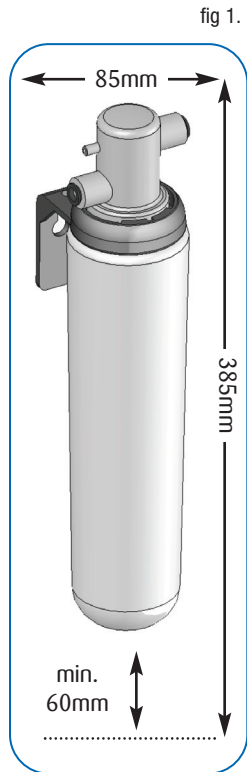


fig 1.

4. Water supply

The installation of your Aqua-Pure AP9000 water filter system requires access to cold water feed from a 1/2” or 3/4” tap, such as that used for dishwashers and mixer taps (ref fig 2).

If you do not have a 1/2” or 3/4” tap available then you will require the services of a licensed plumber to install your Aqua-Pure AP9000 water filter system.

CAUTION: If the dishwasher is connected to hot water you cannot proceed to connect the water filter system by this method.

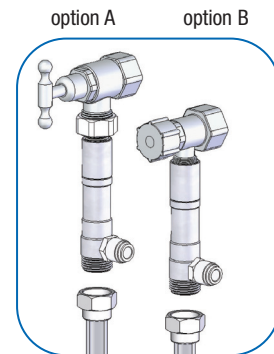


fig 2.

HELPFUL HINT: If there is insufficient room in your cupboard to install the AP9000 water filter system vertically, it can safely be tilted up to 60 degrees clockwise or anti-clockwise

- 4.1 Turn water supply tap off and remove dishwasher/mixer tap connecting hose from tap.
- 4.2 Thread tape Quick Connect Fitting (2) with thread tape supplied (ref fig 5). Remove black stopper plug (1a) from the Multi-Function Control Valve (MFCV) (1) (ref fig 6) and screw Quick Connect Fitting (2) into side outlet port of MFCV (1) until it is tight enough so it will not leak (ref fig 7)

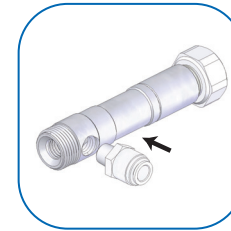
fig 5.



fig 6.



fig 7.



Option A (ref fig 2)

1. Screw MFCV (1) onto 3/4” water supply tap with inlet spinning nut (ref fig 8). Ensure rubber washer is fitted into tap entry nut. Hand tighten sufficiently to avoid leaking.

fig 8.



Option B (ref fig 2)

1. Take MFCV (1) and with an 8mm Hex Key, unscrew inlet nut by inserting Hex Key into key provision in inlet. Once in place, turn Hex Key anti-clockwise to unscrew adaptor nut (ref fig 9).

fig 9.



2. Screw MFCV (1) to water supply tap. Hand tighten sufficiently to avoid leaking (ref fig 10).

CAUTION! Do not overtighten MFCV

fig 10.



- 4.3 Reconnect dishwasher hose to end of MFCV (1) (ref fig 2)

- 4.4 If you do not have a dishwasher or a mixer tap, screw the black stopper plug (1a) removed in above and screw into the end of the MFCV (1) (ref fig 11)

fig 11.

