

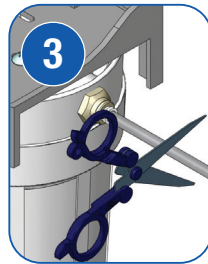
AP9300 Quick Conversion Guide



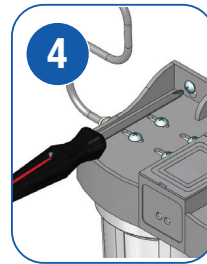
Shut off water supply to the filter



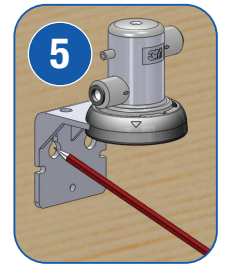
Turn on faucet to drain water



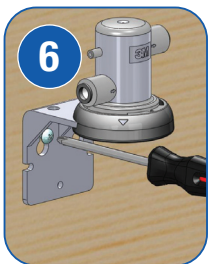
Cut tube squarely on either side of system using sharp scissors / knife blade (cut as close to system housing as possible)



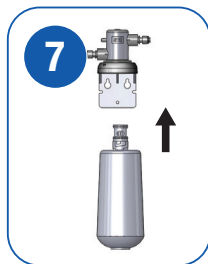
Loosen screw's holding current system to wall and remove filter from wall mount. Discard old system.



Position filter head and cartridge in mounting position and mark mounting holes with pen. (remember to leave 60mm clearance beneath cartridge to enable cartridge removal)



Screw AP9300 head into position



Insert cartridge into AP9300 head and turn towards the right until full lock is achieved.



Push 1/4" tube firmly into AP9300 head on both sides.



Turn water supply back on & check for leaks. Flush cartridge for 2 mins.



Enjoy clean clearer, better tasting filtered water conveniently on tap.

for technical assistance and product support, phone

1300 345 837

www.aquapure.com.au